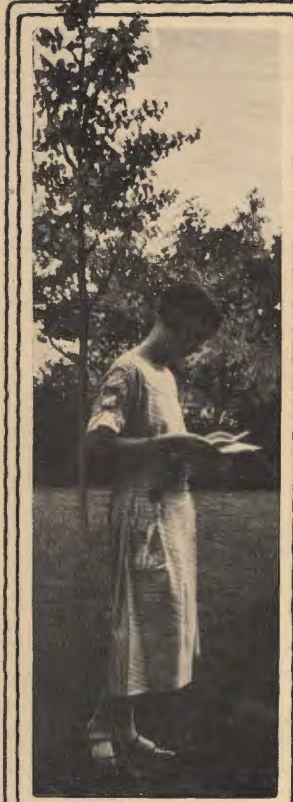




LIGHT BEARER

VOLUME I
NUMBER 6

JUNE
1927



Letter from Home



Sunset on Lake Erie



Morning Call

E.L.T.S.
NUMBER

The LIGHT BEARER

A MONTHLY MAGAZINE OF CHRISTIAN EDUCATION

Published by the Evangelical Synod of North America
at Eden Publishing House, 1712-18 Chouteau Ave., St. Louis, Mo.

VOLUME I

JUNE, 1927

NUMBER 6

The LIGHT BEARER is the official organ of the Board of Religious Education. The magazine section is edited by Rev. Charles J. Keppel, Executive Secretary. All correspondence pertaining to it should be addressed to Rev. Charles J. Keppel, 2013 St. Louis Ave., St. Louis, Mo.

SUNDAY SCHOOL EDITORIAL STAFF: A. Ruecker, Editor; T. Lehmann, Associate Editor; Leota Diesel, Assistant Editor.

The lesson section is edited by Rev. T. Lehmann, 1716 Chouteau Ave., St. Louis, Mo.

All business communications, as orders, remittances, etc., should be sent to EDEN PUBLISHING HOUSE, 1712-18 Chouteau Ave., St. Louis, Mo.

SUBSCRIPTION RATES: Single subscription, 60 cents a year. In clubs of 5 or more, sent to one address, 55 cents each.

CONTENTS

E. L. T. S. in Pictures	1
What E. L. T. S. Students Say about Books, by Bertha McQueen	4
Month by Month in the Sunday School	6
Making College Day Count	7
Independence Day	8
Convention Theme: Teaching for Life	9
Making a Small School Efficient, by Henry Katterjohn	10
A D. V. B. S. "What-Not," by Bertha McQueen	13
"Fifteen Years or More," by Timotheus Lehmann	16
Early English Bible Lore, by Frederick Stoerker	18
There'll Be a Welcome for Us at Baltimore	20
Here's a Seat for You	23
International Uniform Lessons	24
Bible Story Lessons	32
Flash Lights	40
Side Lights on the Picture	40

Entered as Second Class Matter, Dec. 14, 1915, at the Post Office at St. Louis, Mo., under the Act of March 3, 1879. Acceptance for mailing at special rate of postage provided for in section 1103, Act of October, 1917, authorized on July 3, 1918.